



ERL Laser Deck stand Installation Instructions

Step 1

Turn on Laser inside Laser Housing Assembly. There are several different sizes to accommodate different valves. Please request the size you need:

065AA084B Laser Housing Assembly 2 Inch, M12 x 1.75 Thread

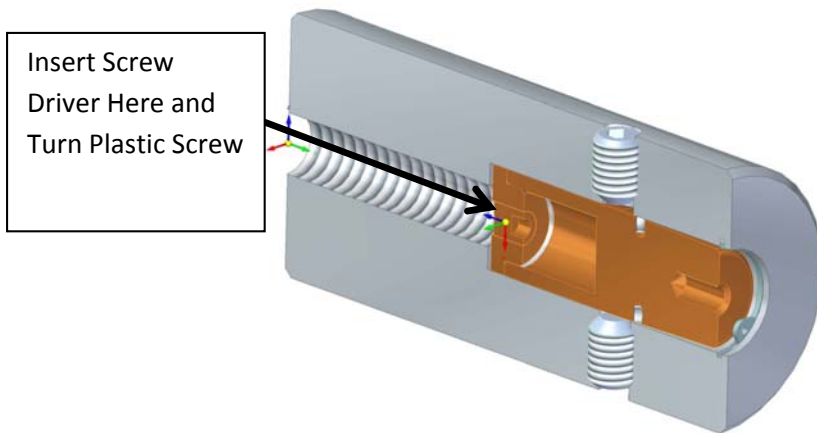
289Y142B Laser Housing Assembly 6 Inch, M14 x 2 Thread

289Y144B Laser Housing Assembly 8 Inch, M20 x 2.5 Thread

289Y146B Laser Housing Assembly 10, 12, 14 Inch, M24 x 3 Thread

065AA110B Laser Housing Assembly 20 Inch, M36 x 4 Thread

Turn on the Laser by turning the plastic screw on the back of the Laser. This can be done with a screw driver and without disassembly.



LASER AND SIGHT GLASS



Step 2

Thread Laser Housing Assembly on to Valve. There are several different sizes to accommodate different valves. Please request the size you need:

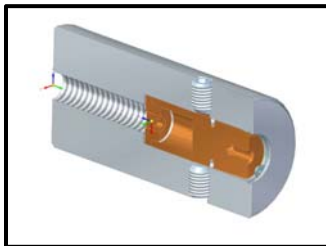
065AA084B Laser Housing Assembly 2 Inch, M12 x 1.75 Thread

289Y142B Laser Housing Assembly 6 Inch, M14 x 2 Thread

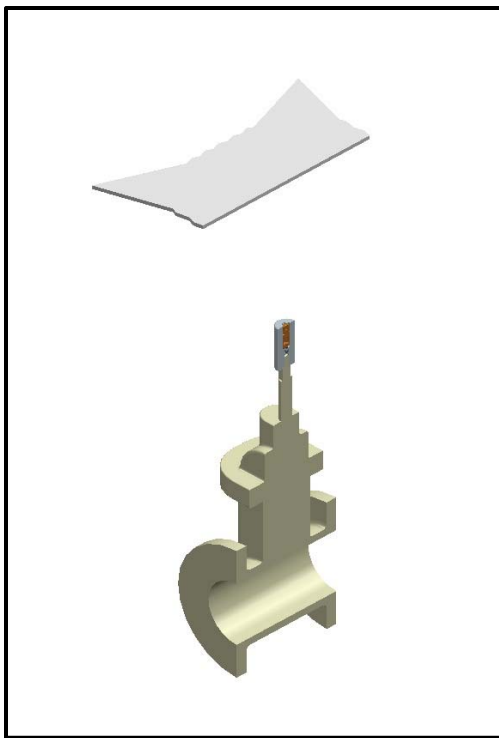
289Y144B Laser Housing Assembly 8 Inch, M20 x 2.5 Thread

289Y146B Laser Housing Assembly 10, 12, 14 Inch, M24 x 3 Thread

065AA110B Laser Housing Assembly 20 Inch, M36 x 4 Thread



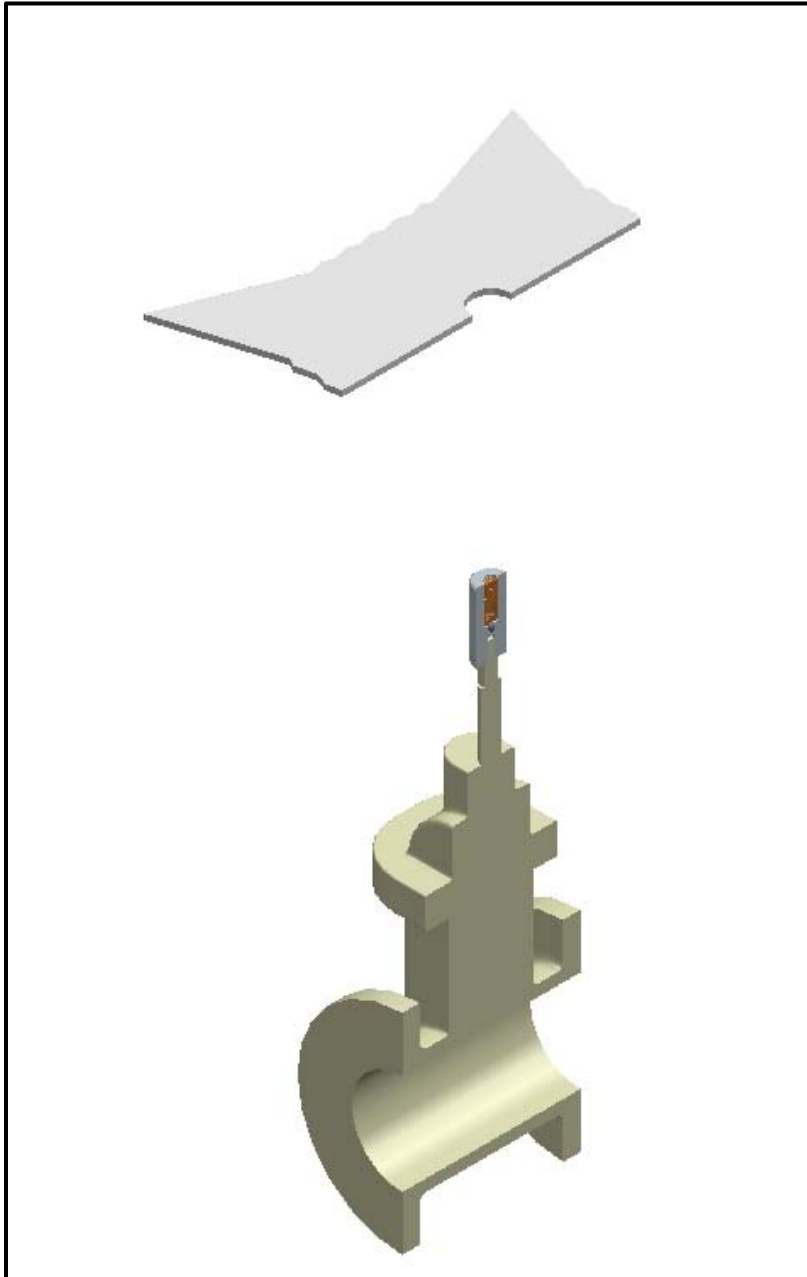
Section view of 212Z095B



View of 289T142B Threaded on Valve

Step 3

The laser is now indicating the location of the center of the hole for the Deck Stand. Cut the hole for the stuffing box around the center of the laser mark.



Section View of Step 3

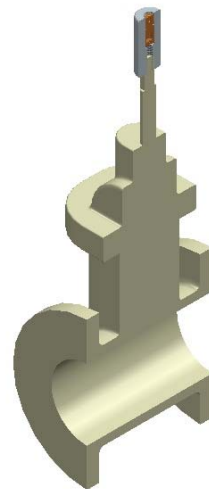
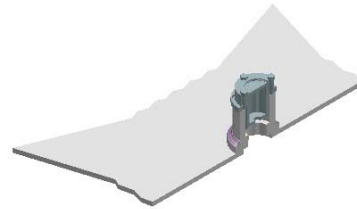
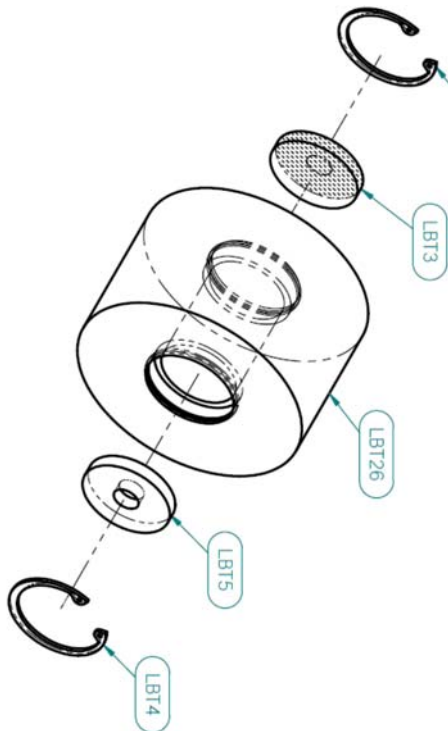
Step 4

Locate the exact location for the Deck stand by using the Sight Glass Deck stand. The OD of the Sight Glass is the same OD as the Deck stand Pipe. The OD is 4.500" or 3.500" depending on application.

223Z090B Deck Stand Installation Tool for 4 Inch Schedule 80 Pipe

062AA095B Deck Stand Installation Tool for 3 Inch Schedule 80 Pipe

Place the Sight Glass over the hole that was cut in Step 3. Center the Sight Glass over the laser. Mark a Circle around the Sight Glass. Remove the Sight glass assembly and weld the Deck Stand into place in the center of the circle



223Z090B